



## Mineral Industry

Drive solutions for reclaimers, stackers,  
bulk conveyors applications

**Control Techniques™**  
**Leroy-Somer™**

  
**EMERSON™**  
Industrial Automation

# A world specialist in drive systems

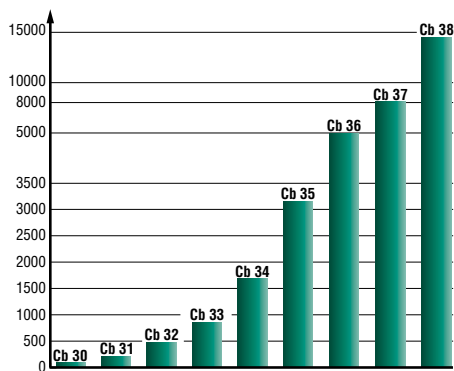
World leader in the design and production of alternators and motors, Leroy-Somer, recognised expert for the last fifty years in the Bulk Conveying industry, has become one of the leaders in Mineral Industrial Drive systems.

Whatever the application, horizontal or inclined conveyors, stackers, reclaimers, Leroy-Somer is always responding to customer's expectations. Due to its know-how and expertise, industrial organisation, locally or worldwide, and through the involvement of the R&D departments, it's bringing innovative and reliable solutions to this market.

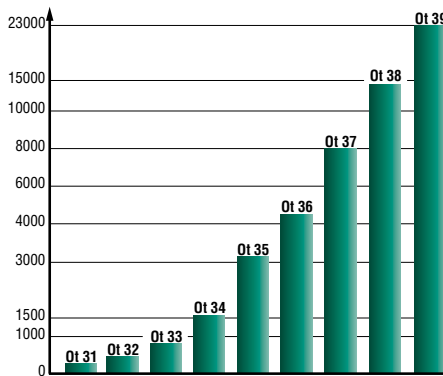
The helical Gear range 3000 is perfectly suited to respond to the market sector demands, with its increased performance, easier maintenance, strength and high reliability as well as product service and availability.

The 3000 Range is :

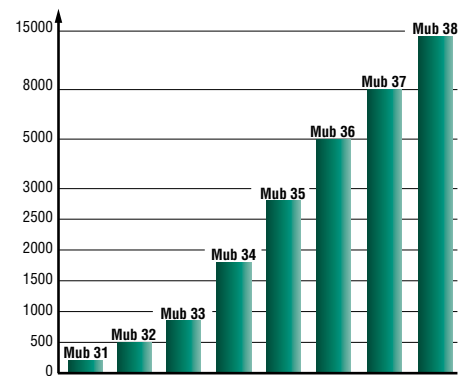
- More service orientated with a modular & compact design for fittings
- Offering a large diversity of mounting arrangements through flanges, C face brackets, feet or Torque arm
- A sealing system optimised with an O ring seal between gearbox and motor, independent dustproof lipseals on the output shaft and a flat gasket on the housing cover
- An oversized bearing concept to allow the highest existing radial loads
- A Monobloc housing Design to support the maximum shock and vibration.



COMPABLOC  
9 sizes up to 14,500 N.m



ORTHOLOC  
9 sizes up to 23,000 N.m



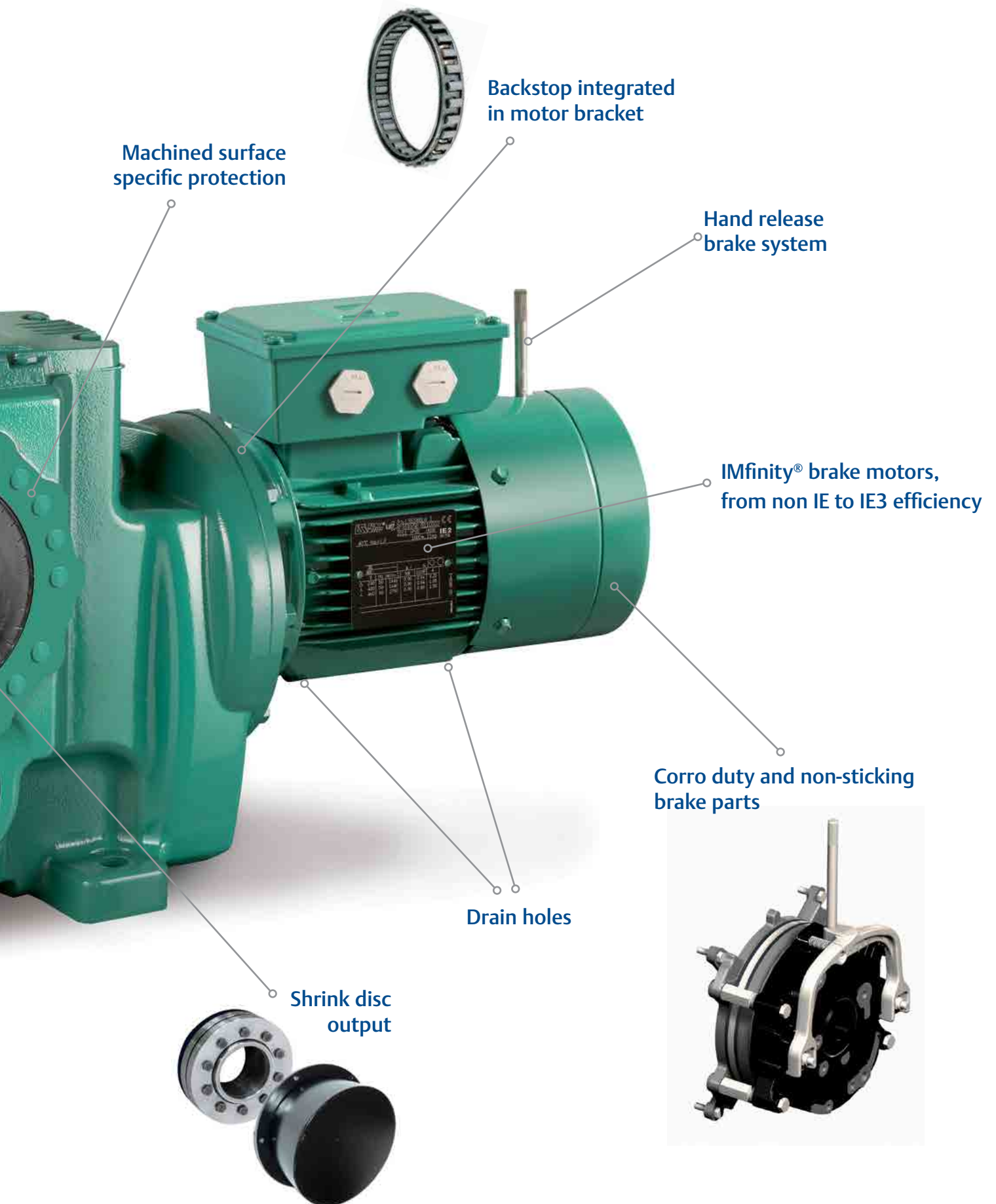
MANUBLOC  
8 sizes up to 14,500 N.m



# Mineral industry drive system solutions

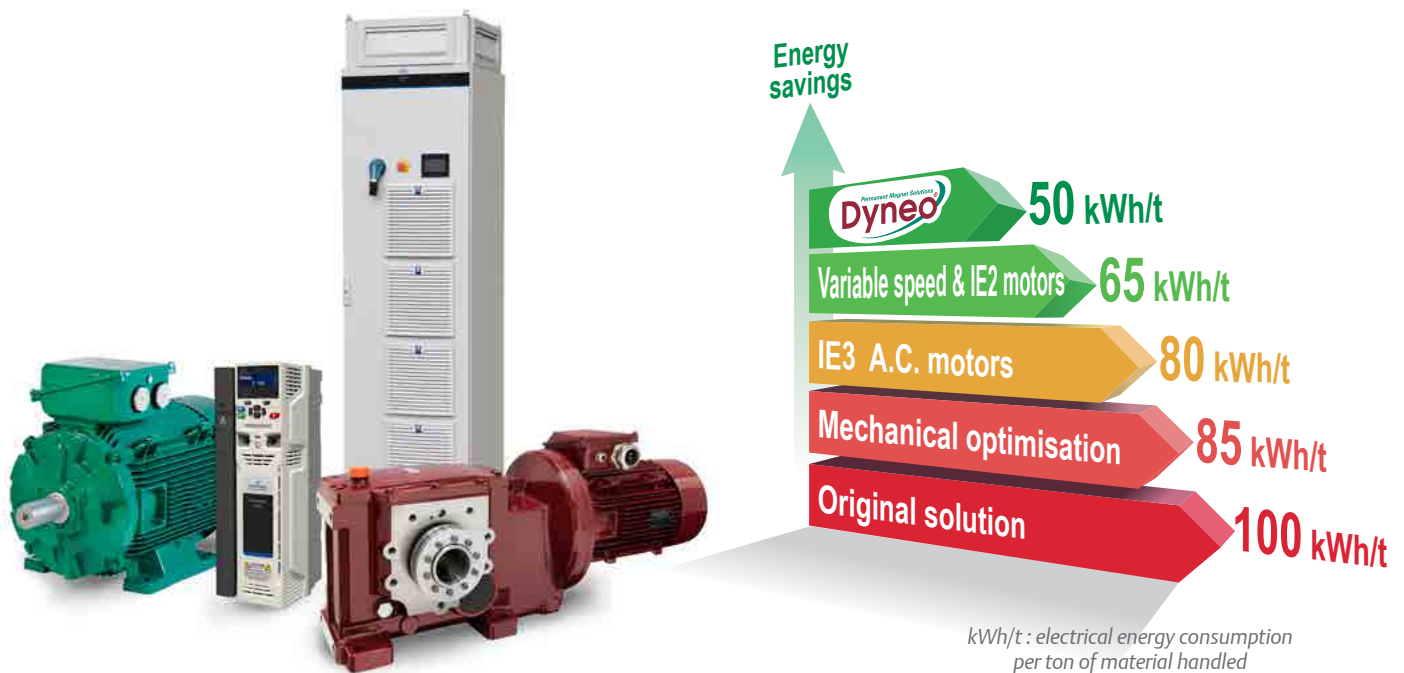
## Helical Bevel Range, 9 sizes up to 23000 Nm

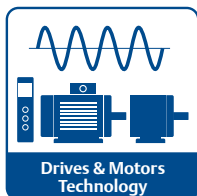




# Technical solutions to optimised energy savings

- Transmission System Improvement
- Use of IE2 or IE3 High Efficiency IMfinity® motors
- Consumption optimisation through variable speed or Dyneo® PM Drive Systems





# Motors & Drives Technology

Emerson Industrial Automation offers an extensive range suitable for the diverse needs of different industries and applications

## Geared motors



**Compabloc**  
up to 14500 Nm



**Orthobloc**  
up to 23000 Nm



**Manubloc**  
up to 14500 Nm

## Brake motors



FFB from 0,12 to 22 kW



FCPL from 30 to 400 kW

## Drives ranges



Unidrive M / 0,25 to 2,8 MW



**Powerdrive F300**  
1,1 to 2,8 MW



**Powerdrive MD2**  
45 to 2,8 MW



**Varmeca**  
Integrated drive  
0,25 to 11 kW

## IMfinity® Motors



**LS and LSES**  
Non IE - IE2 - IE3  
Aluminium IP55  
Frame size 80 to 315 mm  
2, 4 and 6 pole  
IE2-IE3 : 0,75 to 200 kW  
Non IE : 0,12 to 45 kW



**FLSES**  
IE2 - IE3  
Cast iron\* IP55  
Frame size 80 to 355 mm  
2, 4 and 6 pole  
0,75 to 400 kW  
*\*Cast iron: up to 675 kW with FLS model*

## Dyneo® Motors



**LSRPM**  
> IE4  
Aluminium IP55  
Frame size 90 to 315 mm  
1500 to 5500 min<sup>-1</sup>  
0,75 to 350 kW

# Drives & Motors services

## Customized local services and round-the-clock support



- Audit and consultation
- Industry leading install base audits
- Optimizing energy savings and payback
- Retrofit and system upgrades
- Installation and commissioning
- Comprehensive training
- Maintenance
- Global facilities and resources





## A strong union that benefits all our customers

Through our integrated organization, we have an enhanced global presence with 5,500 employees. Our combined local support & services provide:

 5,500 employees



### 40+ Automation Centers

Providing excellent customer support for any product, automation solutions or service requirements



### 23 Manufacturing sites

Producing a comprehensive range of high quality products, optimized for industry-specific customer requirements



### 8 Engineering and Design facilities

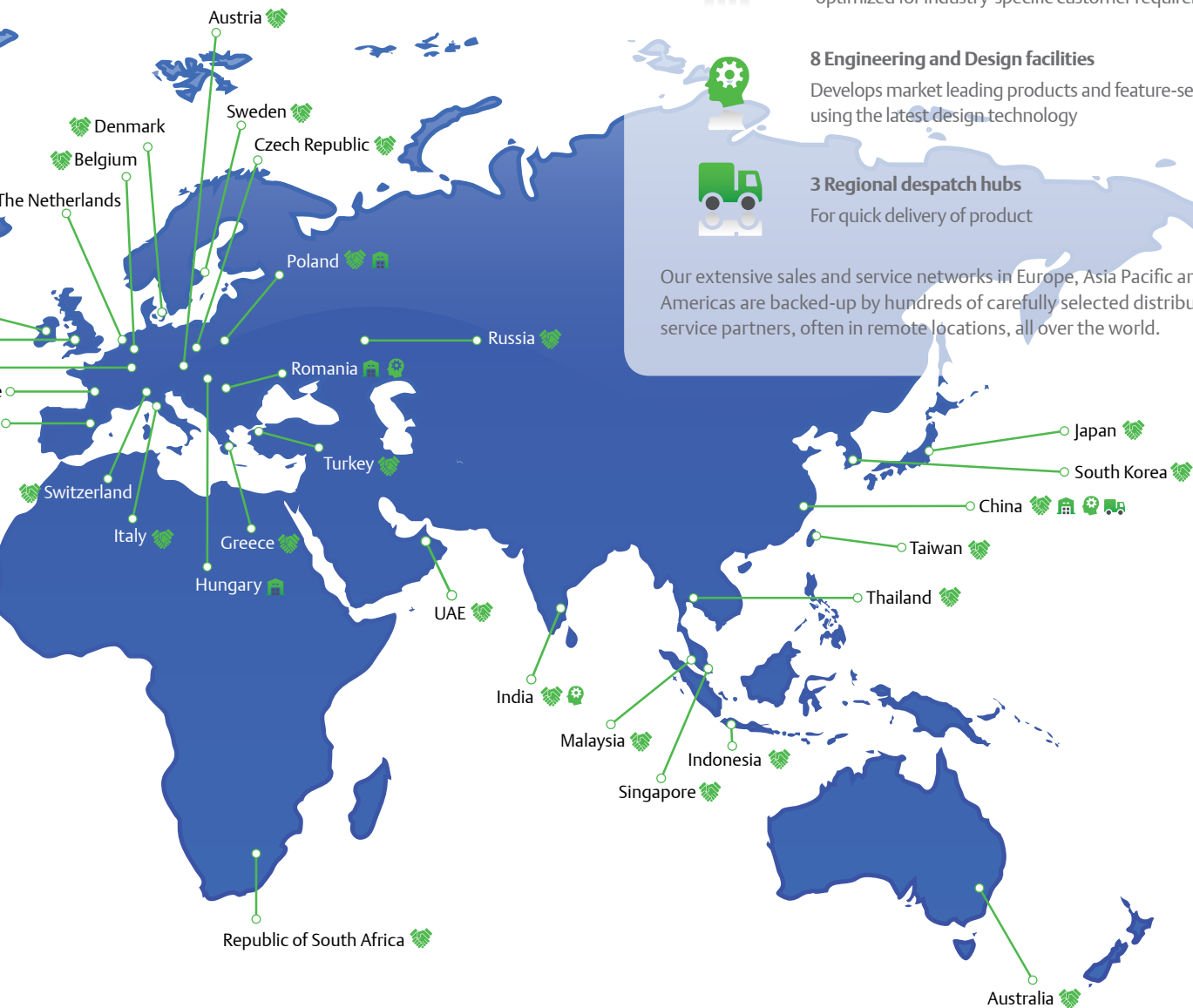
Develops market leading products and feature-sets using the latest design technology



### 3 Regional despatch hubs

For quick delivery of product

Our extensive sales and service networks in Europe, Asia Pacific and the Americas are backed-up by hundreds of carefully selected distributors and service partners, often in remote locations, all over the world.



Note that many countries have more than one of the facilities represented by the icons  
Services are optimized on a country-by-country basis, so please contact your local sales contact for full details of our local offering.

# A Service Offer for mineral industry

## Product Availability

- **Specific delivery charter for Mineral Industry**
  - 3 Weeks delivery time for dedicated products
  - specific inventory organization
- **Choice of delivery times for standard products**
  - guaranteed availability products: 24 hours
  - gear assembly centre concept: 5 to 10 days
  - other products: possibility of customer-specific delivery's agreement



### Express Availability - Geared motors

**Geared motors IMfinity® IE2 class**  
**Helical gears COMPABLOC, MANUBLOC, ORTHOBLOC**  
**Standard environment - Fixed speed**

Integral mounting	MI
Universal mounting	MU
Input shaft mounting	AP

#### AVAILABILITY TIMES EX WORKS (FRANCE), IN WORKING DAYS

Orders received, within the maximum quantity limit, by the factory on day D before 12:00 pm Central European Time, will have the following Availability.  
 For products with options, availability will be that of the longest lead-time item i.e; the product or its options.  
 If the order is received after 12:00 pm 1 working day on the mentioned availability will be added.  
 The maximum quantity is per line of order. Above this maximum quantity, please consult your Sales Office.

D	D + 1	D + 2	D + 5	D + 10	Please consult
---	-------	-------	-------	--------	----------------

IMfinity® IE2 class associated motors 4p

#### IE2 class

230 V Δ / 380 V Y / 400 V Y / 415 V Y 50 Hz - 460 V Y 60 Hz  
 380 V Δ / 400 V Δ / 415 V Δ / 690 V Y 50 Hz - 460 V Δ 60 Hz

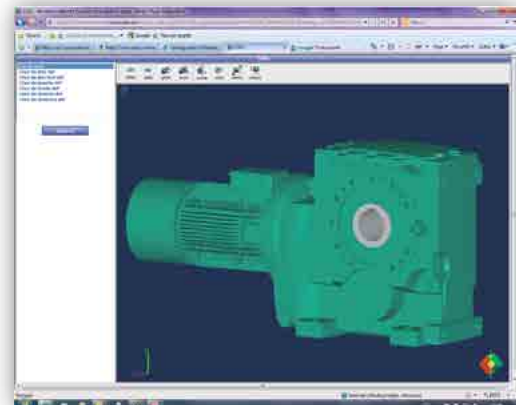
Type	IE	Mounting	Rated power 50/60 Hz P <sub>N</sub> kW	400 V	IE2 class									
					Cb 30-	Cb 31- Ot 31- Mub 31-	Cb 32- Ot 32-, 33- Mub 32-	Cb 33- Ot 34- Mub 33-	Cb 34- Ot 35- Mub 34-	Cb 35- Mub 35-	Cb 36- Ot 36- Mub 36-*	Cb 37- Ot 37-, 38- Mub 37-*	Cb 38- Mub 38-*	Ot 39-
LS 71 L	NC	MI or MU	0.25	Y	5	5	5	5						
LS 71 L	NC	MI or MU	0.37	Y	5	5	5	5						
LS 71 L	NC	MI or MU	0.55	Y	5	5	5	5						
LS 80 LG	IE2	MI or MU	0.75	Y	5	5	5	5	5	5				
LS 80 LG	IE2	MI or MU	0.9	Y	5	5	5	5	5	5				
LS 90 SL	IE2	MI or MU	1.1	Y	5	5	5	5	5	5	2	2		
LS 90 L	IE2	MI or MU	1.5	Y		5	5	5	5	5	2	2		
LS 90 LU	IE2	MI or MU	1.8	Y		5	5	5	5	5	2	2		
LS 100 L	IE2	MI or MU	2.2	Y		5	5	5	5	5	2	2		
LS 100 LR	IE2	MI or MU	3	Y		5	5	5	5	5	2	2		
LS 112 MG	IE2	MI or MU	4	Y			5	5	5	5				



## Configurator

Configurator is a powerful tool to assist in the selection of motors or geared motors combined with variable speed drives. Continuous evolution of this software reaches a new level with IMfinity motors and geared motors, giving the user the possibility to link-up the motor and drive selection.

Best-in-class motors, geared motors and drives combined with this advanced tool ensure the best association is made when selecting products.



**Control Techniques™**

**Leroy-Somer™**

[www.emersonindustrial.com/automation](http://www.emersonindustrial.com/automation)



© Emerson 2015. The information contained in this brochure is for guidance only and does not form part of any contract. The accuracy cannot be guaranteed as Emerson have an ongoing process of development and reserve the right to change the specification of their products without notice.

Control Techniques Limited. Registered Office: The Gro, Newtown, Powys SY16 3BE. Registered in England and Wales. Company Reg. No. 01236886.

Moteurs Leroy-Somer SAS. Headquarters: Bd Marcellin Leroy, CS 10015, 16915 Angoulême Cedex 9, France. Share Capital: 65 800 512 €, RCS Angoulême 338 567 258.